

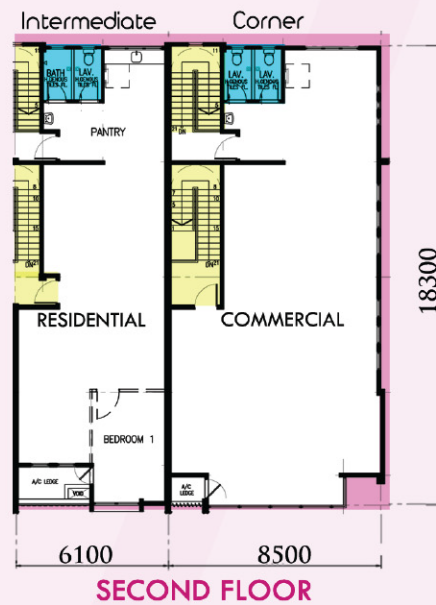
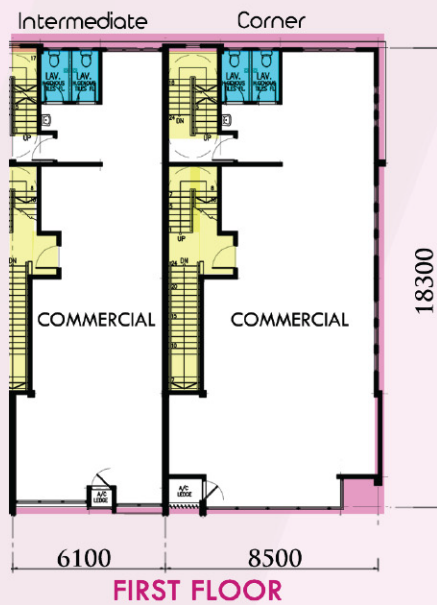


**Walk**  
business park @ Airport



IMAGE COURTESY OF THE ARCHITECTS WALK ASSOCIATES © 2014

## FLOOR PLANS



## ELEVATIONS

**FRONT ELEVATION**



**REAR ELEVATION**



**LEFT ELEVATION**



**RIGHT ELEVATION**



# LEGEND

- 3 STOREY SHOPHOUSES CORNER
- 3 STOREY SHOPHOUSES INTERMEDIATE

FUTURE DEVELOPMENT

PHASE II

PHASE III

PHASE I

- 14571
- 14570
- 14569
- 14568
- 14567
- 14566
- 14565
- 14564
- 14563
- 14562
- 14572
- 14573
- 14574
- 14575
- 14576
- 14577
- 14578
- 14579
- 14580
- 14581
- 14561
- 14560
- 14559
- 14558
- 14557
- 14556
- 14555

MIRI AIRPORT

Airport Road

SITE PLAN

LOCALITY PLAN



BUILDING SPECIFICATIONS

<b>BUILDING STRUCTURE</b>	▲ Reinforced concrete frame	<b>FLOOR FINISHES</b>	▲ General cement sand screed ▲ Non-slip ceramic tiles to toilet ▲ Nosing tile to staircase ▲ Tiles to five foot way
<b>ROOF</b>	▲ Metal roofing	<b>PAINTING</b>	▲ Internal walls - emulsion paint ▲ External walls - weatherbond paint
<b>EXTERNAL WALL</b>	▲ Brick Wall	<b>SANITARY INSTALLATION</b>	▲ Sanitary fittings for each floor ▲ 1 no wash basin ▲ 2 nos WC's
<b>INTERNAL WALL</b>	▲ Brick Wall	<b>ELECTRICAL INSTALLATION</b>	▲ Concealed wiring ▲ Standard lighting and socket points ▲ Single phase power supply
<b>WALL FINISHES</b>	▲ Glazed ceramic wall tiles up to 1500mm high to toilets		
<b>WINDOWS</b>	▲ Natural anodized aluminium - framed windows glazed with colour tinted glass		
<b>CEILING</b>	▲ Level 1 - General emulsion paint to soffit of reinforced concrete slab ▲ Level 2 - General gypsum board on suspended aluminium tees ▲ Toilets - asbestos - free cement board		
<b>DOORS</b>	▲ Natural anodized aluminium roller shutter to shop front and rear ▲ Fire rated entrance door to upper floor ▲ Timber door to others		



Developer:  
**GSD AMF ALLIANCE (LB) SDN. BHD.**  
(A Member of Green Summit Development Group of Companies)

019 812 7788  
[www.greensummitdevp.com.my](http://www.greensummitdevp.com.my)



The information contained herein is subject to change and cannot form part of an offer or contract. While every reasonable care has been taken in providing this information, the owner or its agent cannot be held responsible for any inaccuracies. Whilst we believe the contents of this layout to be correct and accurate at time of print, they are not to be regarded as statements or representations of fact. Illustrations in the layout are artist's impressions which serve only to give an approximate idea of the project. All artist's impressions and all plans are subject to any amendments as may be approved by the relevant authorities.