



SALES HOTLINE
019 812 7788
www.greensummitdevp.com.my

Awards Winning Developer:



翠峰发展集团
**GREEN SUMMIT DEVELOPMENT
 GROUP OF COMPANIES**

Lot 2120-2121, 2nd Floor, Taman Yakin Commercial Centre,
 98000 Miri, Sarawak.

Tel: 085 42 77 88 Fax: 085 42 42 78

Business Hour: Mon - Fri: 8am - 5pm / Sat : 8am - 12noon

The information contained herein is subject to change and cannot form part of an offer or contract. While every reasonable care has been taken in providing this information, the owner or its agent cannot be held responsible for any inaccuracies. Whilst we believe the contents of this billboard to be correct and accurate at time of print, they are not to be regarded as statements or representations of fact. Illustrations in the billboard are artist's impressions which serve only to give an approximate idea of the project. All artist's impressions and all plans are subject to any amendments as may be approved by the relevant authorities.

Locality Plan



It is not just any project. It's
THE BEST NEIGHBOURHOOD IN MIRI



A thriving commercial hub with all your needs



Tamu Council Project

Phase 1 Neighborhood Mall

Phase 1 Completed 3 Storey Commercial Centre

Phase 3 3 Storey Booster Hub

Phase 3 Hypermarket

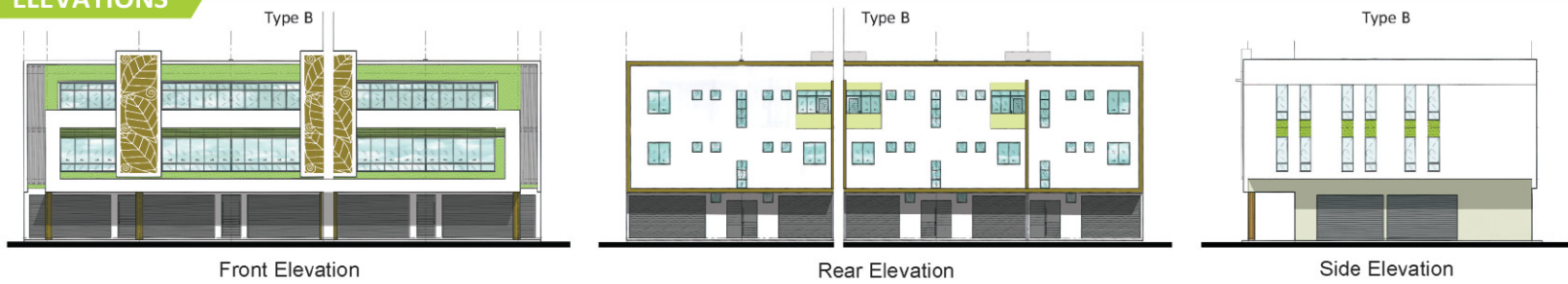
Phase 3 3 Storey Booster Hub

Phase 2 2 Storey SGC - Impact Hub

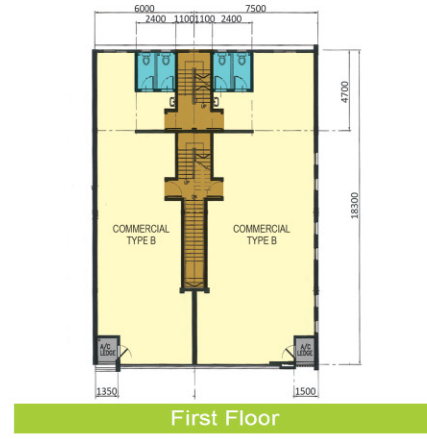
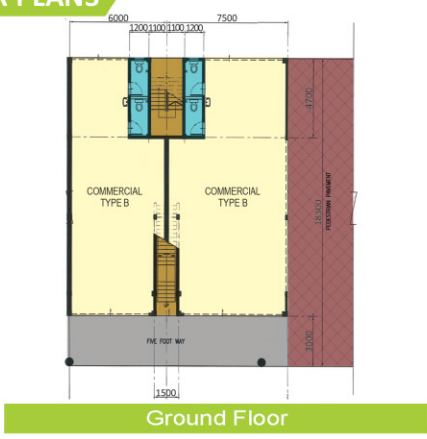
Residential

Mosque

ELEVATIONS



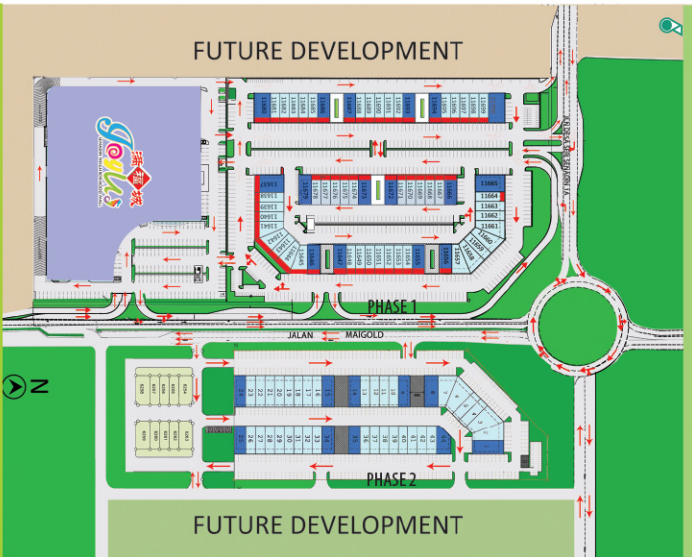
FLOOR PLANS



STREET VIEW AERIAL VIEW



SITE PLAN



LEGEND

- 3-STOREY SHOPHOUSE CORNER UNITS
- 3-STOREY SHOPHOUSE INTERMEDIATE UNITS
- SOLD UNITS



BUILDING SPECIFICATIONS

SPECIFICATIONS	
Building Structure	- Reinforced concrete frame
Roof	- Metal roofing
External Wall	- Brick Wall
Internal Wall	- Brick Wall
Wall Finishes	- Glazed ceramic wall tiles up to 1500mm high for toilets.
Windows	- Natural anodized aluminium - framed windows glazed with colour tinted glass.

SPECIFICATIONS	
Ceiling	- General emulsion paint to soffit of reinforced concrete slab for level 1 & 2. - Level 3 - generally gypsum board on suspend aluminium tees.
Doors	- Natural anodized aluminium roller shutter to shop front and rear. - Fire rated entrance door to upper floor. - Plywood flash door to others.
Floor Finishes	- Generally cement sand screed. - Non-slip ceramic tiles to toilet. - Tiles to five foot way.

SPECIFICATIONS	
Paintwork	- Internal walls - Emulsion paint. - External walls - Weather protection paint.
Sanitary Installation	- Sanitary fittings for each floor. - 1 no wash basin. - 2 nos Wc's (Commercial) / 1 no WC (Residential)
Electrical Installations	- Concealed wiring. - Standard lighting and socket points. - Single phase power supply.